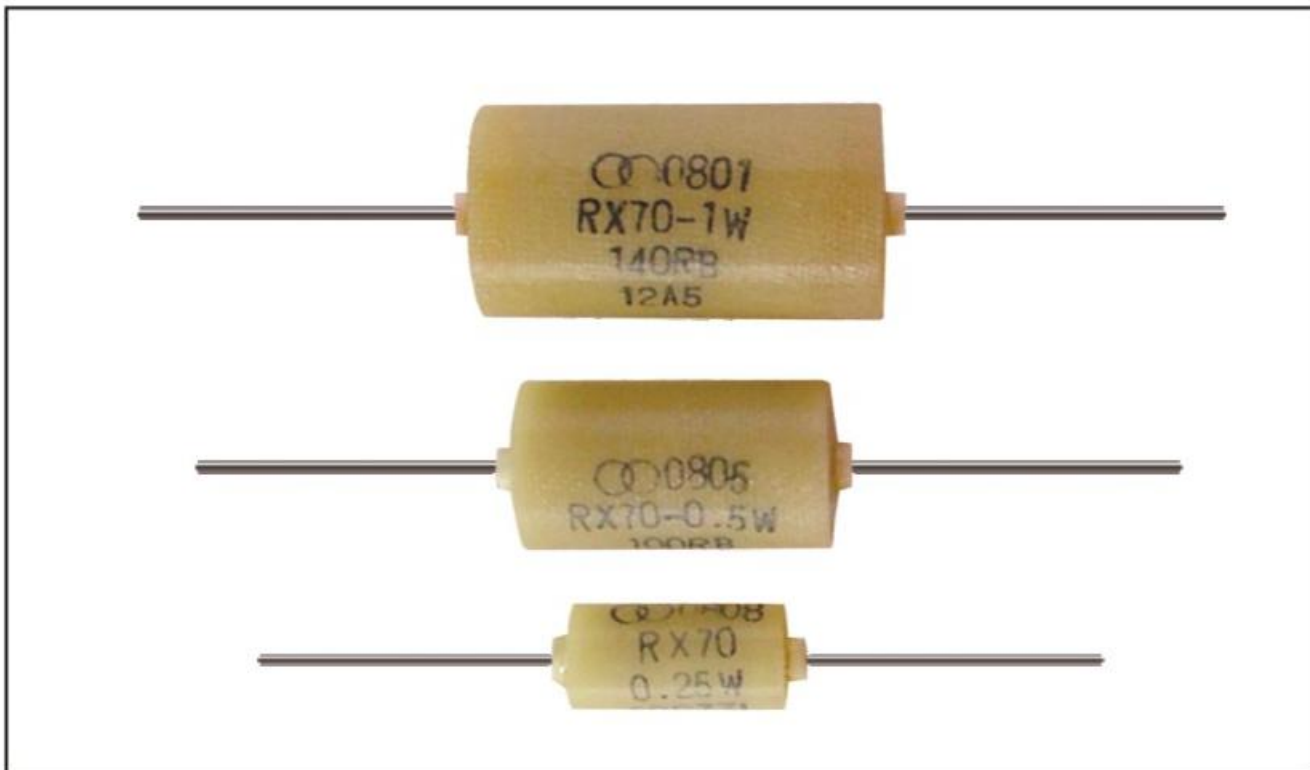
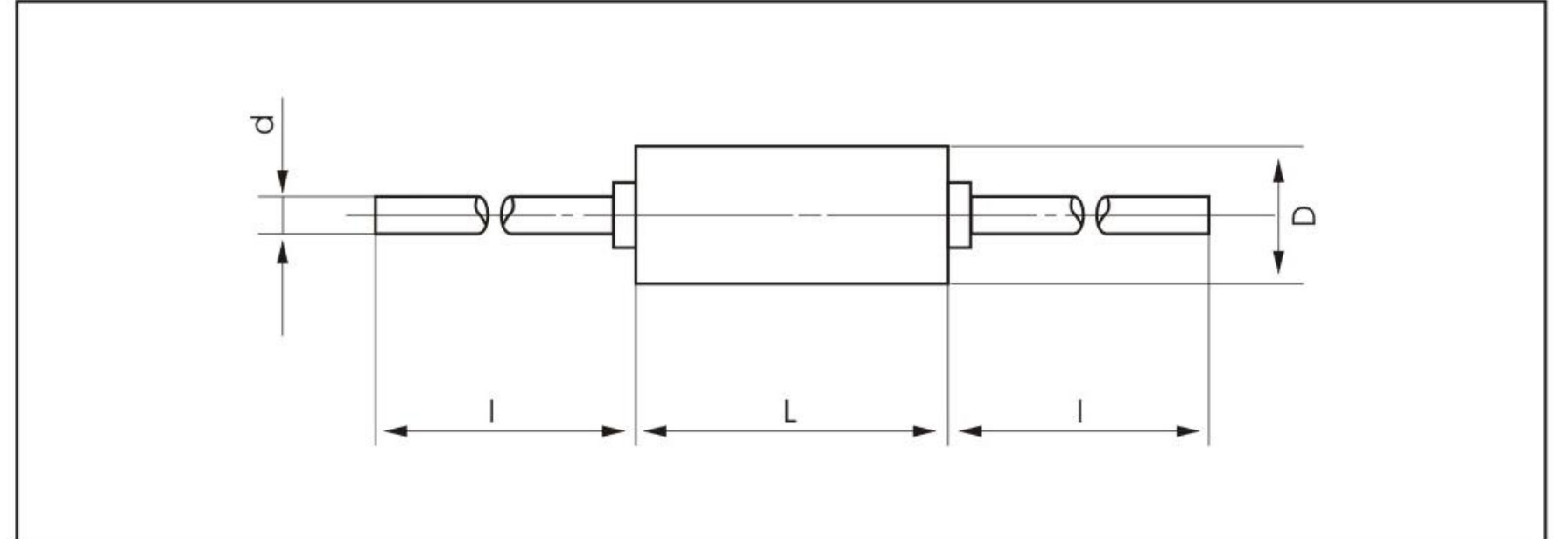


RX70 high precision wire-wound resistors



Construction



Features

- Meets IEC standards
- Resistance value series according to E series of IEC63
- Excellent properties of insulation and humidity-proof
- Excellent stability and reliability up to 0.1% and $1 \times 10^{-6}/h$
- Close accuracy and low temperature coefficient

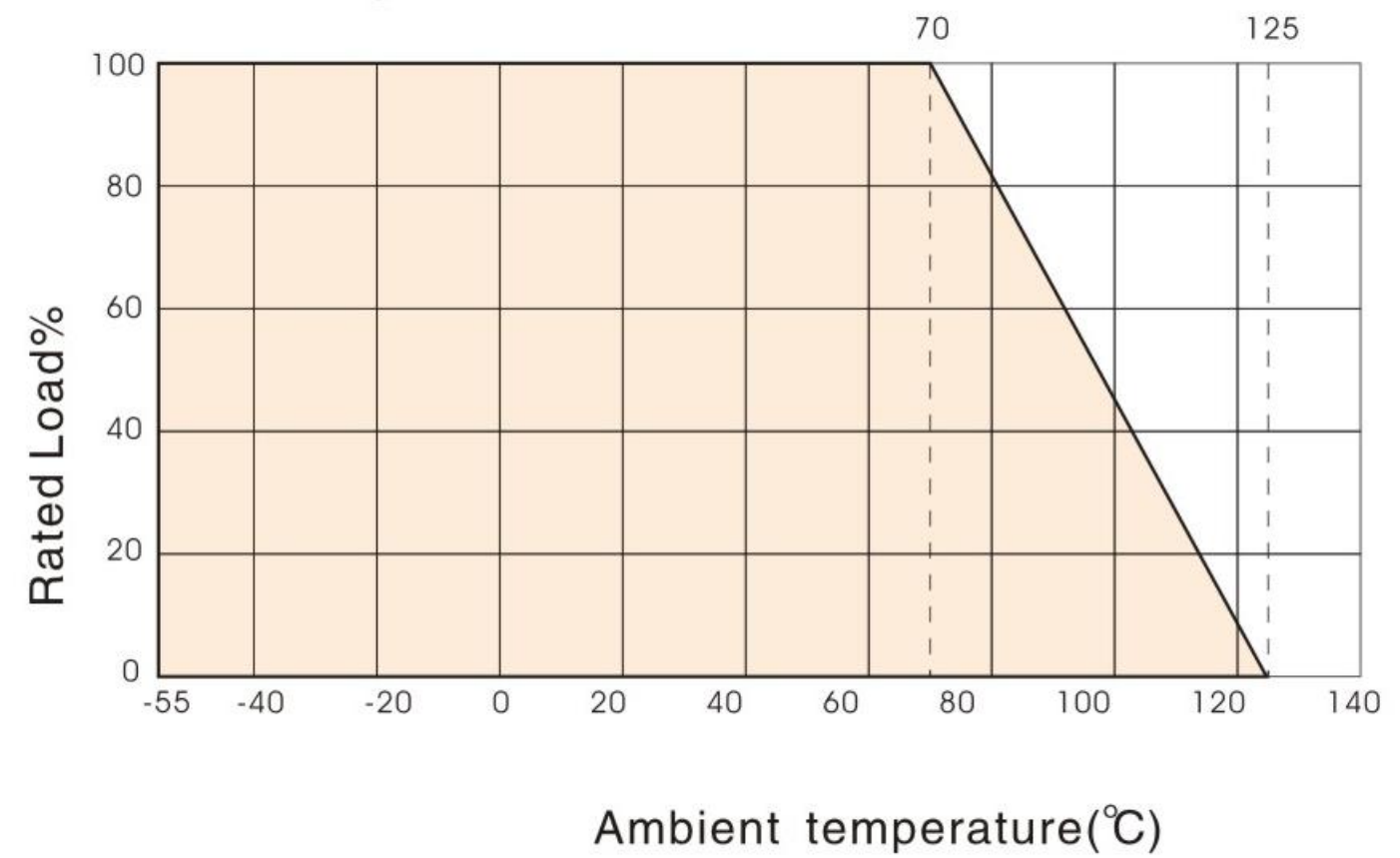
Reference Standards

GB/T5729-2003
GB5734-85

Applications

- Used in meters and instruments
- Other electrical equipments

Derating Curve



Technical Specifications

Type	Power (W)	Resistance Range (Ω)	Tolerance (%)	T.C.R (10 ⁻⁶ /K)	Size(mm)				Limiting Voltage (DC or AC RMS.)	Insulation Voltage (DC or AC Peak)
					Body		Terminal			
					Dmax±0.3	Lmax±0.3	d	l		
Rx70 (RX11)	0.25	1~500K	±0.01(L)	± 10 ± 20 ± 25	8	15.5	0.8	28±3	250	350
	0.5	1~1M	±0.025(P)		12	22			500	700
	0.75	1~2M	±0.05(W)		12	27			1000	1400
	1	1~4M	±0.1(B)		15	27.5				
	2	1~5M	±0.25(C)		18	38				
	3	1~10M	±0.5(D) ±1(F)		24	56				

How To Order

Example

RX70	0.5W	1MΩ	±0.01%	± 10(10 ⁻⁶ /K)	box
Type	Power	Nominal Value	Tolerance	TCR	Packaging
RX70	0.25W 0.5W 0.75W 1W 2W 3W	1MΩ	± 0.01% ± 0.025% ± 0.05% ± 0.1% ± 0.25% ± 0.5% ± 1.0%	± 10(10 ⁻⁶ /K) ± 20(10 ⁻⁶ /K) ± 25(10 ⁻⁶ /K)	plastic bag box